

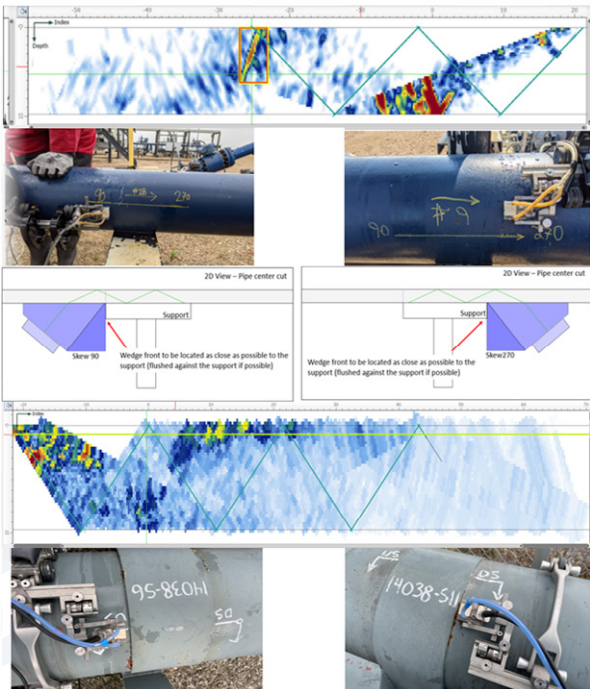


Corrosion Under Pipe Supports

MULTIPLE SKIP PHASED ARRAY TECHNIQUE



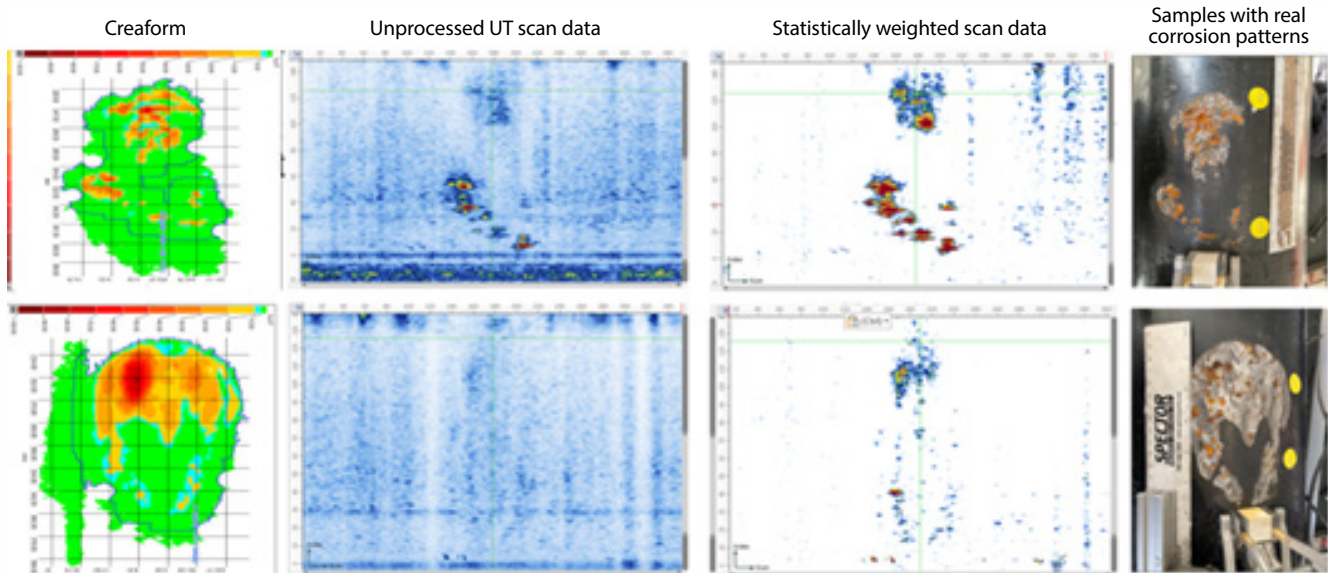
OUR CUPS APPROACH



- Multiple Skip Phased Array Technique
- Proprietary Acuren software
- True to geometry data representation
- Robust corrosion detection (screening), highlighted by Acuren anomaly detection algorithm
- Lifting pipes at locations identified by UT to perform quantitative wall loss assessment using 3D laser scanning (Creaform)

ANOMALY DETECTION TOOL FOR ROBUST DETECTION

- Corrosion flaws are weak reflectors (shape and roughness dependent) so it is difficult to perform meaningful calibration
- It is important to distinguish between corrosion (local indication) and surface roughness (geometry indication)
- Anomaly detection algorithm sets calling criteria based on image intensity difference as compared to estimated background noise (statistical weighting)
- This highlights unusual indications through scan which can be correlated to isolated corrosions



WHY LET CUPS IMPACT YOUR PROCESS?

Our in-service process ensures the correct solution is personalized to fit your unique needs.

CUPS Process Matrix



CONTACT OUR CUPS EXPERTS TODAY

1-800-218-7450



www.acuren.com
info@acuren.com